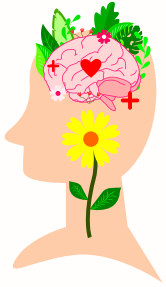


# SEHE SPRING COURSE LIST



## SEHE 001 SOCIETY, CULTURE AND ENVIRONMENT (ONLINE)

Explores the relationship between human society and the natural environment; focus on economic development, energy, technology, and environmental social movements. Prof. Chikako Takeshita, MW 2-3:20pm. **CRN 75089**



## SEHE 002 HEALTH EQUITY & HEALTH JUSTICE (ONLINE)

Theories and methodologies for the study of community health, global and local health inequities. Considers policies and interventions addressing health disparities, including community-engaged research. Prof. Nicole Gatto. TR 6:30-7:50pm. **CRN 75468**.



## SEHE 005 STATISTICS, HEALTH AND SOCIETY

An introduction to statistics using social, health, and environmental applications. Topics include descriptive statistics; simple linear regression and correlation; probability; distributions; confidence intervals; and hypothesis testing. Prof. Analisa Flores. MWF 9-9:50am. **CRN 74708**.



## SEHE 101 COMMUNITY BASED RESEARCH METHODS

An anti-oppressive toolkit. Addresses research design, research ethics, data collection and management, and public engagement. Prof. Cristina Gomez Vidal. F 8-11:50am. **CRN 75091**.



## SEHE 105 ENVIRONMENTAL HEALTH AND SOCIAL JUSTICE

An interdisciplinary examination of the relationship between environmental health and social justice emphasizing gender, race, class, and globalization as analytical lenses. Prof. Chikako Takeshita. MW 6:30-7:50pm. **CRN 75092**.

Instagram: [sehe\\_ucr](#)

Website: [sehe.ucr.edu](http://sehe.ucr.edu)

# SEHE SPRING COURSE LIST



## SEHE 106 MOVEMENTS & ADVOCACY IN EJ AND HEALTH

An overview of research on social and political movements, legal and policy advocacy. Examines movement and advocacy outcomes, challenges, and opportunities for promoting health equity and environmental justice. Prof. Ellen Reese. MW 11-12:20. **CRN 75093.**



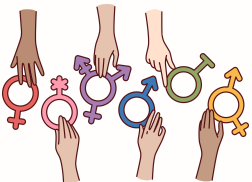
## SEHE 116 INTERSECTIONALITY, CLIMATE EMOTIONS AND MENTAL HEALTH

Introduces emotional responses to climate change. Identifies the relationships between emotions and mental health outcomes. Explores the roles of race, gender, age, and social marginalization Prof. Jade Sasser. MW 5-6:20pm. **CRN 75094.**



## SEHE 135 ENVIRONMENTAL WAR CRIMES

Examines wartime environmental destruction in local and global context. Surveys legal frameworks designed for limiting environmental harms associated with war, with attention to climate change, food justice, reproductive justice, and Indigenous self-determination. Dr. Bronwyn Leebaw. TR 2-3:20pm **CRN 75095.**



## SEHE 163 GLOBALIZING ROE: THE PAST, PRESENT AND FUTURE OF ABORTION WORLDWIDE

Surveys the modern history of abortion policy and provision from legal, medical, religious, and public health perspectives. Centers the lived experiences of different individuals in their need to access abortion from a global lens. Dr. Cassia Roth. MW 2-3:20pm **CRN 75097**



## SEHE172 PUBLIC HEALTH, THEN AND NOW

Surveys the modern history of societal attempts to protect the health of human populations. Focuses on the lived experiences of individuals and cultures in the development of public health globally Prof. Cassia Roth. MW 5-6:20pm. **CRN 75098.**

Instagram: [sehe\\_ucr](#)

Website: [sehe.ucr.edu](http://sehe.ucr.edu)