

UCR SoM ED II Look Ahead

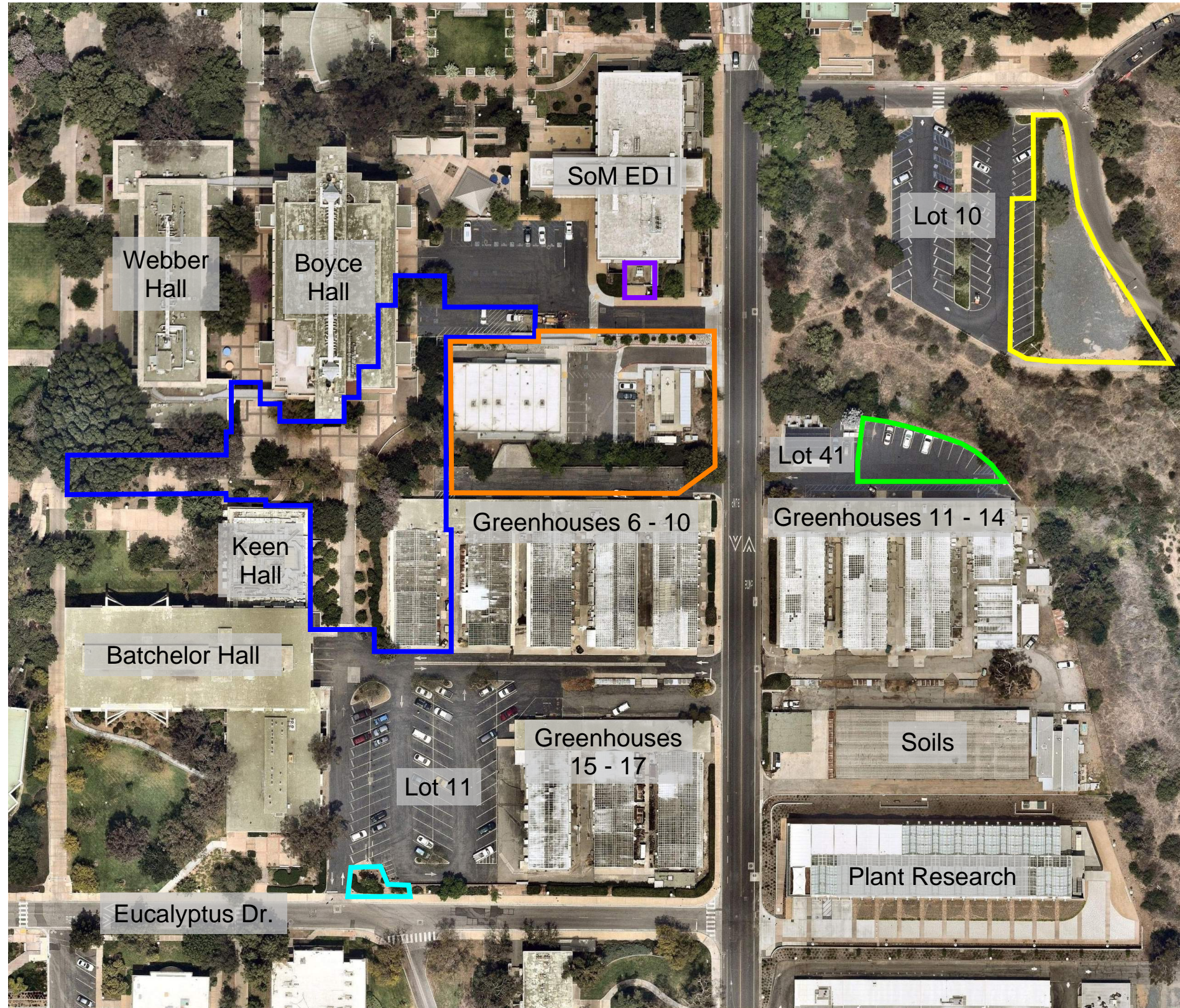


HENSEL PHELPS
Plan. Build. Manage.

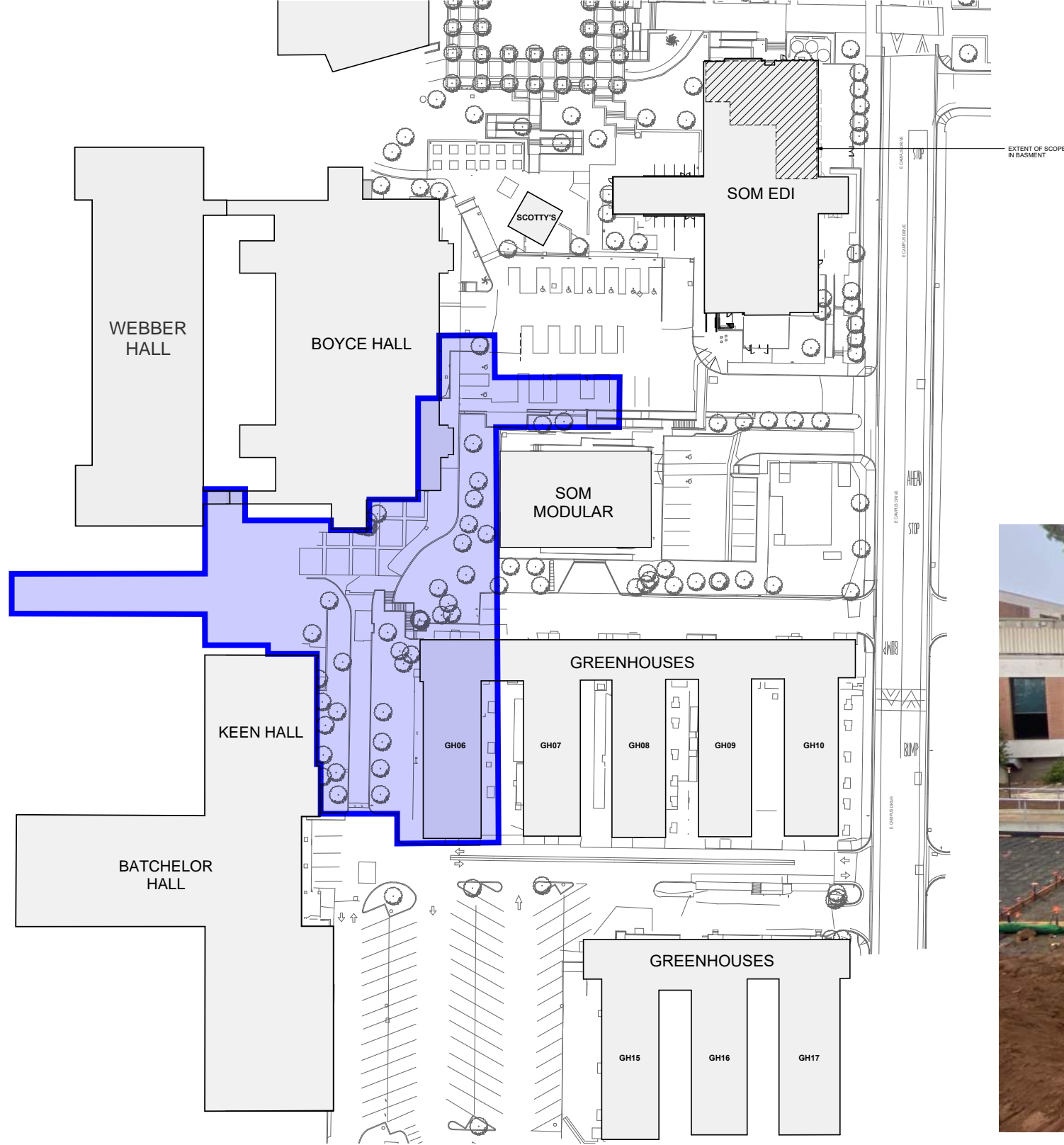
12/09/21

1

UCR SoM ED II - Overall Site



UCR SoM ED II - West Courtyard



West Courtyard:

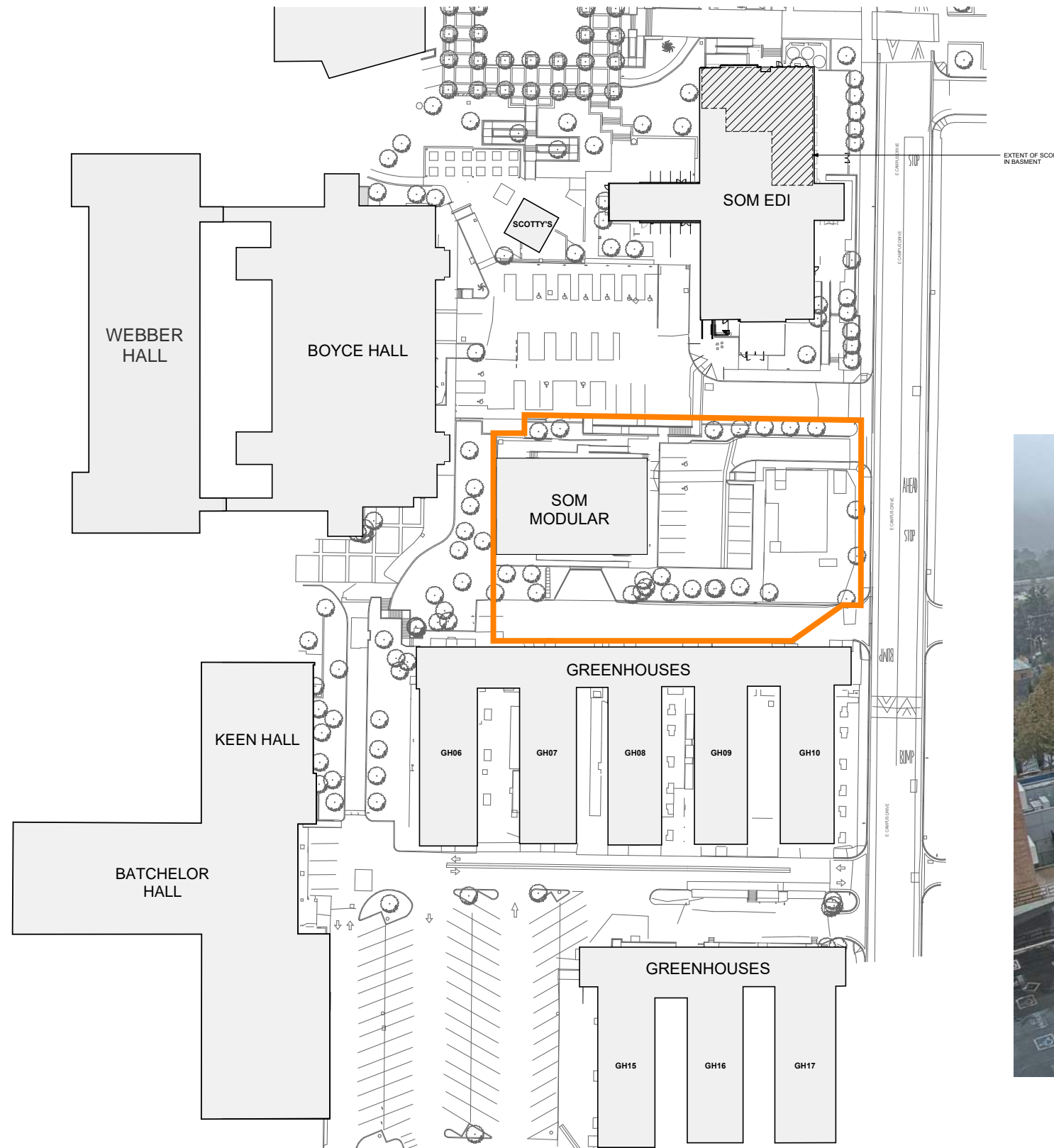
- Place remaining sections: 12/15 - 12/18
- Set temp. loading dock: 12/30 - 1/4
- Punchlist: 1/4 - 1/7

Leave out sections:

- Boyce West: 12/27 - 12/30
- Keen North: 12/27 - 12/20



UCR SoM ED II - Building Footprint



Building Footprint:

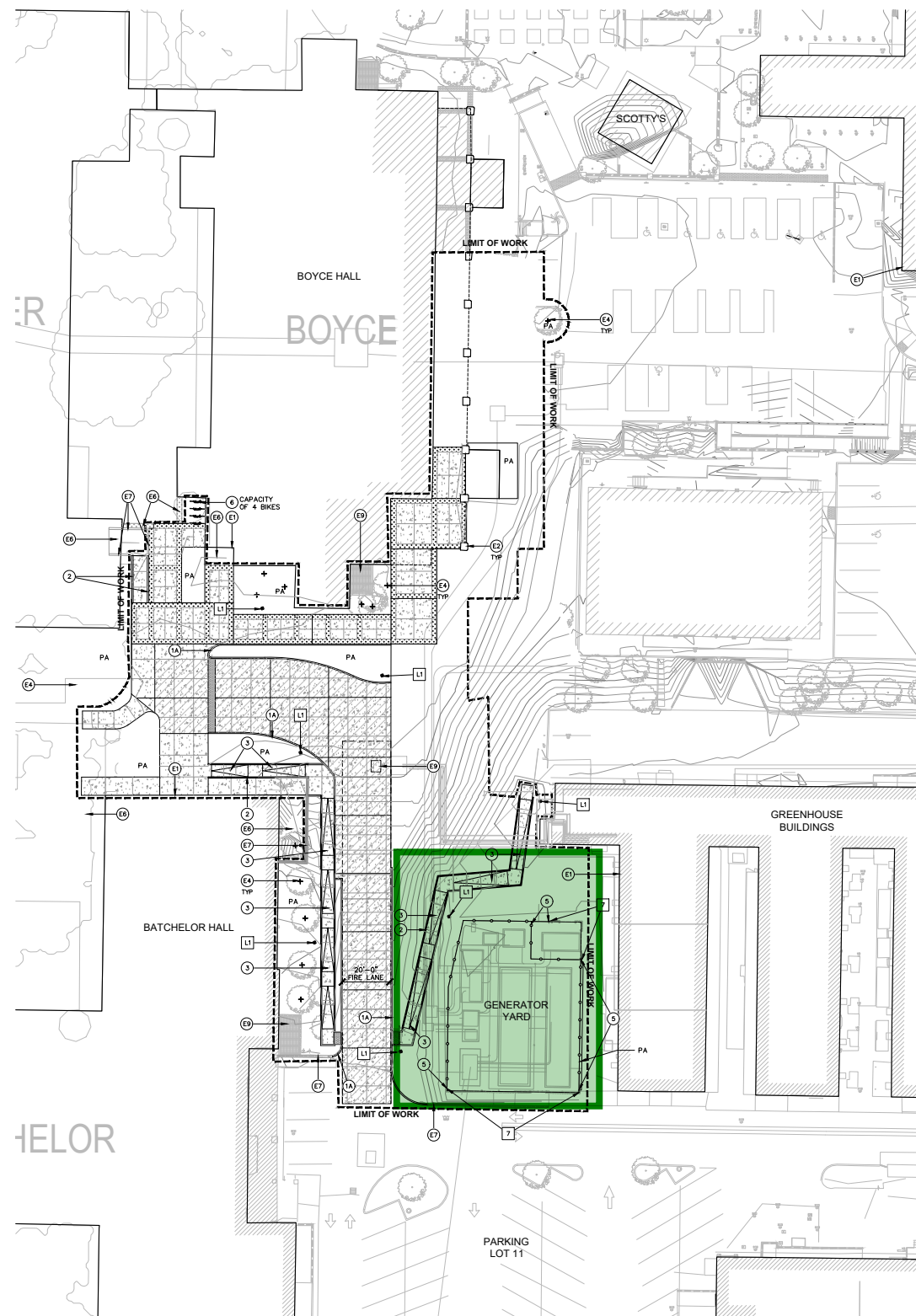
- Pothole for shoring: 12/8 - 12/9
- Continue drilling shoring: 12/3 - 12/13
- Install hadrail: 12/8 - 12/10
- Set tiebacks, shotcrete, & lagging: 12/13 - 1/6



UCR SoM ED II - New Generator Yard

New Generator Yard:

- Test and recommission gear: 12/7 - 12/9
- Shutdown USR 026 Webber cut over: TBD
- Shutdown USR 028 SoM EDI cut over: TBD
- Shutdown USR 027 Boyce cut over: TBD
- Remove temporary generator: TBD based on above
- FRP enclosure: 12/22 - 1/5
- Fence: 1/11 - 1/17



UCR SoM ED II - Headhouse Build Out

Headhouse Build Out:

- Shutdown 025 Steam pup pieces: 12/20
- Excavate footing: 12/21
- FRP footing: 12/22 - 12/29
- Frame walls & roofing: 12/30 - 1/6
- MEP rough-in: 1/7 - 1/10
- Door frames: 1/7 - 1/10
- Roof tie-in: 1/7 - 1/13

