

# DID YOU KNOW



**DISABILITY AWARENESS MONTH**  
**HISTORICAL & COOL FACTS**



# DID YOU KNOW



Tom Cruise, from blockbuster action movies like Mission Impossible and War of the Worlds, has dyslexia.



**DISABILITY AWARENESS MONTH**



**RIVERSIDE**  
Student Disability  
Resource Center

# DID YOU KNOW



Leonardo DiCaprio, who starred in movies Shutter Island and Titanic, has been diagnosed with OCD.



**DISABILITY AWARENESS MONTH**

# DID YOU KNOW



The movie, A Beautiful Mind, details mathematician and Nobel Prize winner John Nash's struggle with paranoid schizophrenia.



**DISABILITY AWARENESS MONTH**

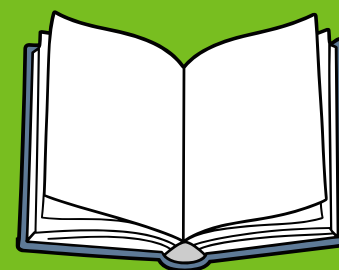


**RIVERSIDE**  
Student Disability  
Resource Center

# DID YOU KNOW



President Franklin D. Roosevelt, 32<sup>nd</sup> U.S. President, had a book written by Hugh Gallagher, about him that hid his disability from the world.



**DISABILITY AWARENESS MONTH**



**RIVERSIDE**  
Student Disability  
Resource Center

# DID YOU KNOW



Andrea Boccelli -tenor, musician, writer, and musical producer-  
was hit in the head at 12 years old and left totally blind.



**DISABILITY AWARENESS MONTH**

# DID YOU KNOW



Michael Phelps was diagnosed with ADHD as a child, but gave up Ritalin when he turned to sports to bring discipline to his world.



**DISABILITY AWARENESS MONTH**



**RIVERSIDE**  
Student Disability  
Resource Center

# DID YOU KNOW



Paul Orfalea founded his business empire, KINKO, during his college years because he had a learning disability.



**DISABILITY AWARENESS MONTH**



**RIVERSIDE**  
Student Disability  
Resource Center



# DID YOU KNOW



Dan Aykroyd, from Ghostbusters, was diagnosed with Asperger's syndrome in early adulthood, which inspired the iconic film.



**DISABILITY AWARENESS MONTH**

# DID YOU KNOW ?

**Daniel Radcliffe, most famous for his role as Harry Potter, was diagnosed with dyspraxia- a neurological disorder that affects motor skill development.**



**DISABILITY AWARENESS MONTH**



**RIVERSIDE**  
Student Disability  
Resource Center

# DID YOU KNOW



Jill Kinmont, Olympic-bound skier, suffered a devastating fall and was left quadriplegic. The Other Side of the Mountain (1975) movie told her story.



**DISABILITY AWARENESS MONTH**



**RIVERSIDE**  
Student Disability  
Resource Center

# DID YOU KNOW



Michael J. Fox, from movie Back to the Future, was diagnosed with Parkinson's disease at the age of 29 and became an activist for others diagnosed.



**DISABILITY AWARENESS MONTH**

# DID YOU KNOW



In the film, Avatar, character Jake Scully portrays a wheelchair user who is not disabled when his mind links with his avatar.



**DISABILITY AWARENESS MONTH**



**RIVERSIDE**  
Student Disability  
Resource Center

# DID YOU KNOW



Winnie the Pooh characters that could be diagnosed with mental health disorders: Eeyore with a depressive disorder and Piglet with an anxiety disorder.



**DISABILITY AWARENESS MONTH**

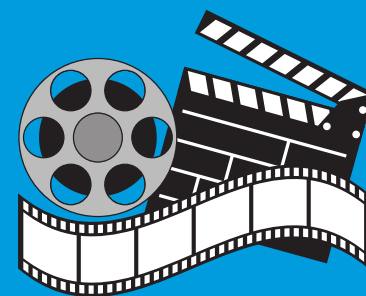


**RIVERSIDE**  
Student Disability  
Resource Center

# DID YOU KNOW



Academy Award winner, Harold Russell, went on to become the first Chair of the President's Committee on Employment of the Handicapped.



**DISABILITY AWARENESS MONTH**

# DID YOU KNOW



The Theory of Everything is a movie about the life of famous theorist, Stephan Hawking, who battled with ALS.



**DISABILITY AWARENESS MONTH**



**RIVERSIDE**  
Student Disability  
Resource Center



# DID YOU KNOW



The Association on Handicapped Student Service Programs  
in Post-Secondary Education (AHSSPPE) became AHEAD on  
July, 25, 1992.



**DISABILITY AWARENESS MONTH**



**RIVERSIDE**  
Student Disability  
Resource Center

# DID YOU KNOW



In 1969, UCR opened an office to provide services for students with disabilities, establishing one of the first such offices in higher education at the time.



**DISABILITY AWARENESS MONTH**

# **DID YOU KNOW**



**The original name of the SDRC was Student Special Services and provided disability and veteran services to UCR students. It was changed to SDRC in 2017.**



**DISABILITY AWARENESS MONTH**



**RIVERSIDE**  
Student Disability  
Resource Center

# DID YOU KNOW



The number of students seeking SDRC services has grown by 749% from 2015 - 2025, going from 350 students to nearly 3,000.



**DISABILITY AWARENESS MONTH**



**RIVERSIDE**  
Student Disability  
Resource Center

# DID YOU KNOW



Section 504 of the Rehabilitation Act of 1973 was the first federal law to prohibit discrimination on the basis of disability.



**DISABILITY AWARENESS MONTH**

# DID YOU KNOW



The Americans with Disabilities Act (ADA) of 1990 is a landmark U.S. civil rights law that prohibits discrimination against people with disabilities in all public areas of life.



**DISABILITY AWARENESS MONTH**



**RIVERSIDE**  
Student Disability  
Resource Center

# DID YOU KNOW



The Americans with Disabilities Act Amendments Act of 2008 (ADAAA) clarified and broadened the definition of “disability” to ensure broader coverage.



**DISABILITY AWARENESS MONTH**



**RIVERSIDE**  
Student Disability  
Resource Center

# DID YOU KNOW



Prevalence of students with disabilities at U.S. colleges and universities: about 20% of undergraduates and 10% of graduate students report having a disability.



**DISABILITY AWARENESS MONTH**