

## **Directions for Student Seminar Day 2021 Picnic**

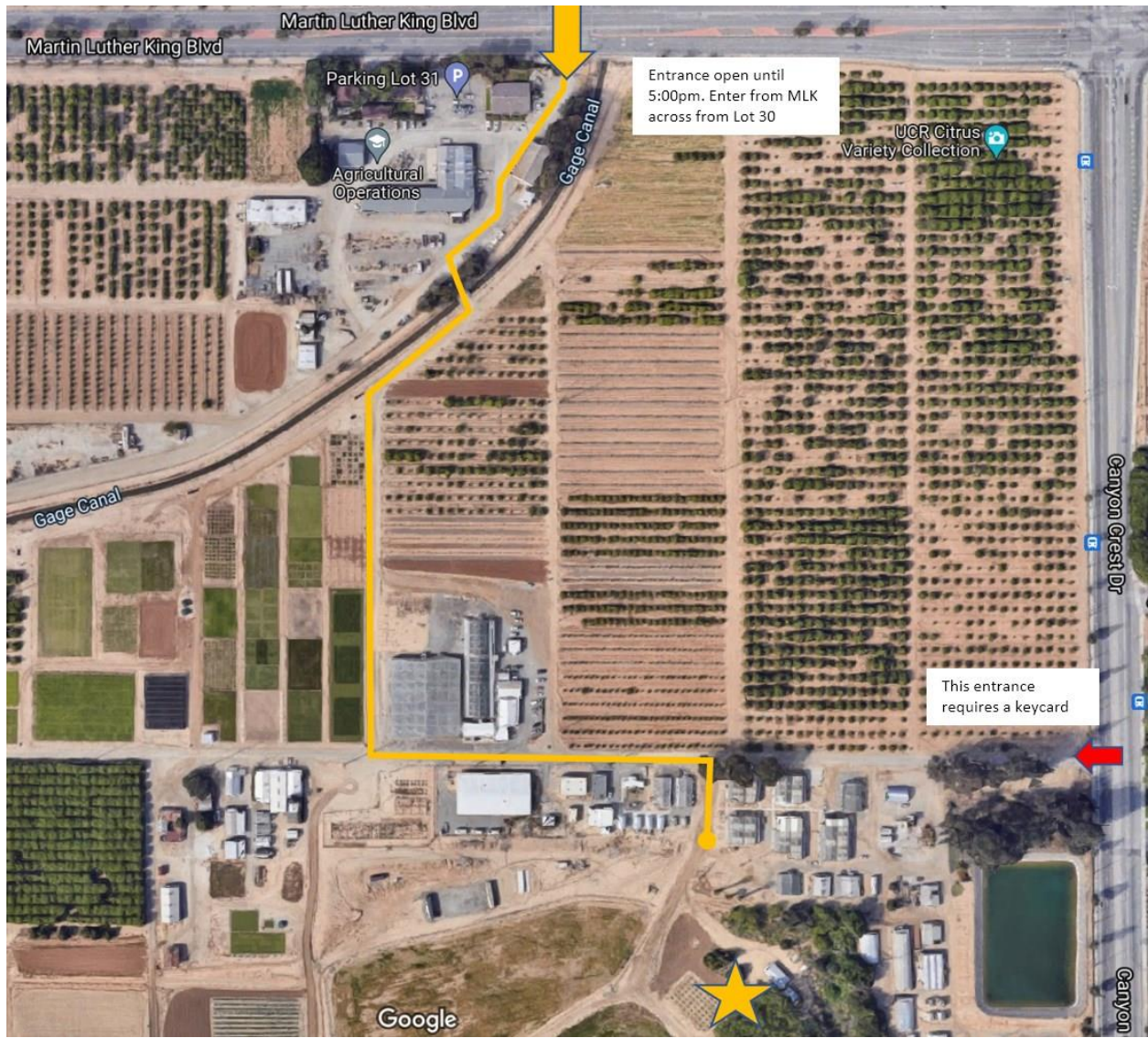
**Sept. 15, 2021 4:00pm**

**Important Note:** Please watch speed on all dirt roads, but especially near active plots, driving above 10 mph creates dust clouds that can damage plants.

1. Enter Agricultural Operations from Martin Luther King Blvd.
2. Drive past the office and quickly take the first left turn over a concrete bridge, then turn right on the dirt road.
3. Follow the road briefly along the canal and then take the first left in front of the open plots.
4. Drive down this dirt road until you pass a large building on the left and reach a paved road, turn left.
5. Follow the paved road towards the Canyon Crest Dr. gate until you see eucalyptus trees on the right.
6. You can park off the road here or turn right at the first tree and follow the dirt path between greenhouses and down a hill.
7. Follow signs for the parking areas around the picnic area (see map). Find parking out of the way of the road.

Please see the map for more information as well as a map of some potentially good places to park and avoid the plot to the east of the shaded picnic area. Overall be considerate of Ag Ops for allowing us to hold our event here and let's try to not give them any reason to regret their decision.

\*If you arrive later than 5:00, the MLK gate may be locked. Please contact Kathy Redd 951-907-6913 or Benjamin Nyman 626-215-0413 for entry instruction.







## Parking Areas

Parking at Ag Ops is generally a laissez faire situation, but with important considerations. Some larger open areas are highlighted on the map, but signs may be posted on the day to direct parking further.

Avoid blocking any vehicle or personnel outlets and driving over land that is being worked. Pulling off the side of the roads or paths is usually a safe bet and be smart about your vehicle's capabilities. Make sure to watch your speed on any dirt paths to avoid creating a dust cloud.