

# The Graduate Program in Plant Biology

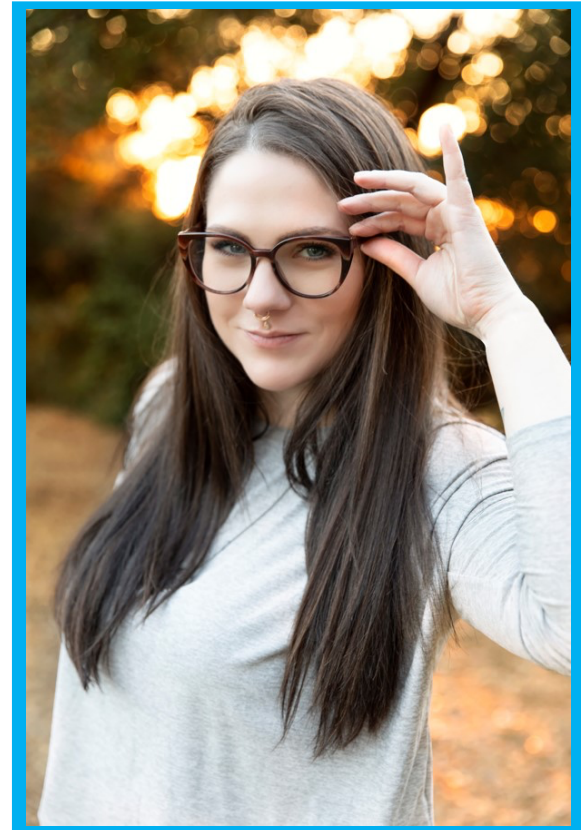
*is proud to announce the  
PhD Defense of*

**Jess Toth**

**Major Professor:  
Dr. Jaimie Van Norman**

**March 16, 2021  
1:00-3:00 pm**

<https://ucr.zoom.us/j/97659921991?pwd=Vmd2WjJCNWVldk44OWcxQ1ISSWxOdz09>



“WALLFLOWER (WFL): a LRR-RLK, simultaneously localizes to opposite sides of root hair cells and functions to position hairs”